

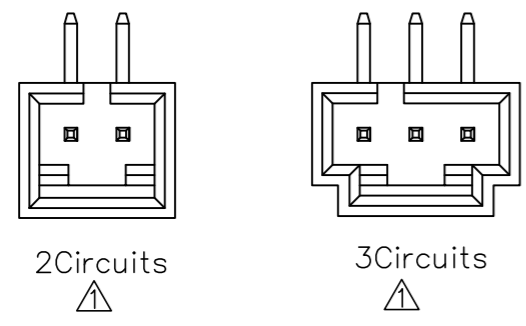
REV	LOCATIONS	DESCRIPTION	DATE	REVISER	APPD
1	△	1: New Drawing, add 2,3Circuits 2: Change Structure and dimensions	15/DEC/23	MATT	LEO

Electrical

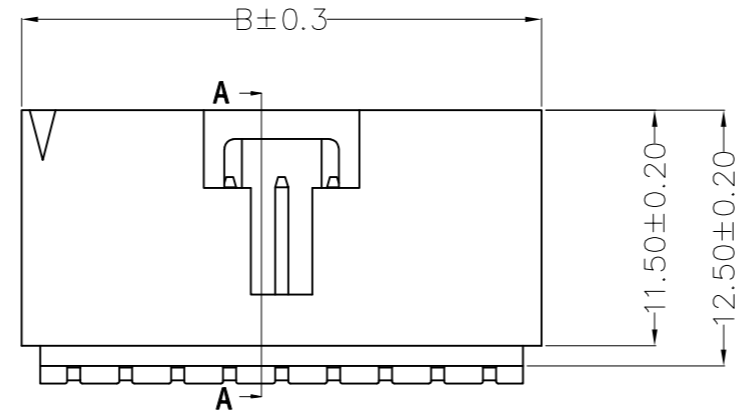
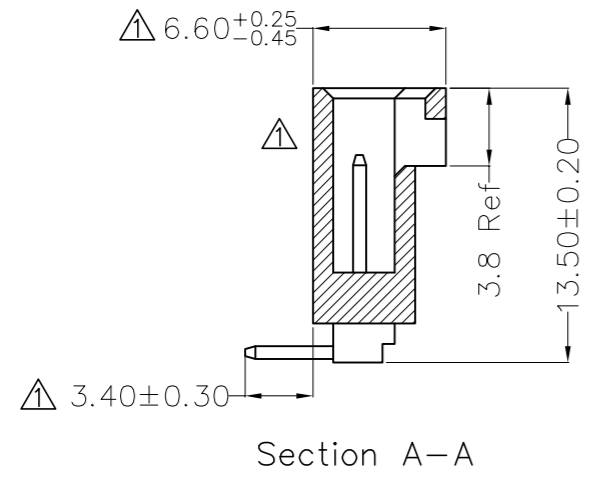
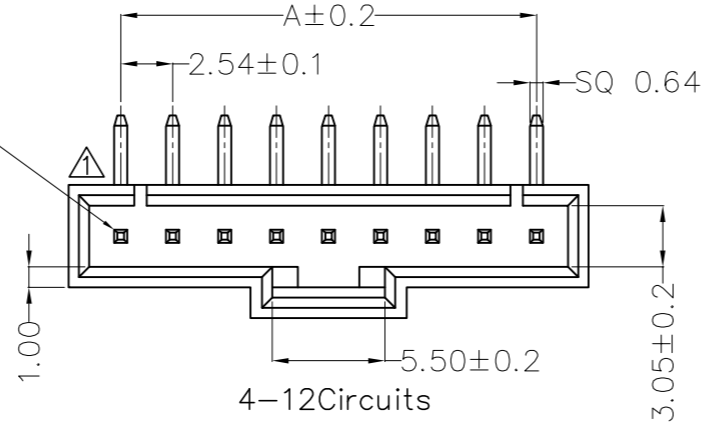
Current Rating: 2.5A AC(rms)/DC  
Voltage Rating: 250V AC(rms)/DC  
Contact Resistance: 20 mΩ Max  
Insulation Resistance: 1000 MΩ MIN  
Withstanding Voltage: 800V AC r.m.s  
Temperature Range—Operating: -25°C~+85°C

Material and Plating

Housing: PA66( UL 94V-0)/Black  
Contact Pin: Brass  
Plating: Gold Plated  
Mates With(Housing): FHG25402 Series



Circuit No.1



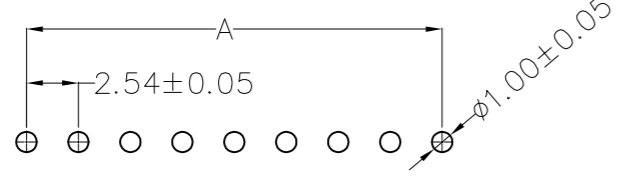
Circuits (n)	Part No.	Dimensions	
		A	B
2	FWF25405-S02B12K6B	2.54	7.62
3	FWF25405-S03B12K6B	5.08	10.16
4	FWF25405-S04B12K6B	7.62	12.70
5	FWF25405-S05B12K6B	10.16	15.24
6	FWF25405-S06B12K6B	12.70	17.78
7	FWF25405-S07B12K6B	15.24	20.32
8	FWF25405-S08B12K6B	17.78	22.86
9	FWF25405-S09B12K6B	20.32	25.40
10	FWF25405-S10B12K6B	22.86	27.94
11	FWF25405-S11B12K6B	25.40	30.48
12	FWF25405-S12B12K6B	27.94	33.02

Ordering Information

FWF 254 05 — S XX B 1 2 K6 B  
1 2 3 4 5 6 7 8 9 10

1	Category FWF-Wafer	2	Series Number 254-Pitch2.54mm	3	Distinction No. 05	4	Row Option Single Row	5	Circuits XX	6	Entry Angle B-90° Angle
7	Plating 1-Gold Plated	8	Material-Resin 2-PBT	9	Color-Resin K6-Black	10	Packaging B-PE Bag				

Recommended P.C.Board Layout  
General Tolerances: ±0.05mm



THIRD ANGLE PROJECTION	GENERAL TOLERANCES (UNLESS SPECIFIED)		APPROVE BY FRANK	DATE 8/JUL/13	PART NO. FWF25405-SXXB12K6B	ITEM NO. FWF25405		
	DESIGN UNITS Metric(mm)	X.±0.40	X.±5'	CHECKED BY JACOB	DATE 8/JUL/13	TITLE Wire to Board (Wafer) Pitch 2.54mm 90° Angle (DIP)		Building Technology Cornerstone
SCALE 5:1	SIZE A4	X.XX±0.20	.XX'±1'	DRAWN BY CHERRY	DATE 8/JUL/13	THIS DRAWING CONTAINS INFORMATION THAT IS PROPRIETARY TO TXGA INDUSTRIAL ELECTRONICS(S.Z)CO.,LTD AND SHOULD NOT BE USED WITHOUT WRITTEN PERMISSION	REV 1	SHEET NO. 1/1